

## PUBLIC ADDRESS SYSTEM AMPLIFIER- MODEL- VE-AMP-9i(400W-500W)

### Overview

Verbena model VE-AMP-9i is rugged, reliable, cost-effective (400-500) watts two Zone PA Mixer amplifier. VE-AMP-9i is ideal for multi-speaker installations where a user needs to separately set power levels for two separate areas such as indoors & outdoors.



### Features

- 6 Mic & 2 aux inputs.
- Stereo Music operation for any function's programmes
- Facilitates connection and operation of two separate groups of speakers simultaneously on 'Mono' mode. Ideal for places of hospitals, Schools.
- Line Input & Output on each zone for connecting to a Mixer and Booster Amplifier respectively. Preamplifier output for recording.
- Box Speaker/Driver Unit selector switch for each zone. Bass boost defeated at Driver Unit position for safer operation of driver units. Zone On/Off facility.
- Resettable circuit breaker for protection against overload and short circuit
- Bar Graph Signal Display

### Electrical Specification

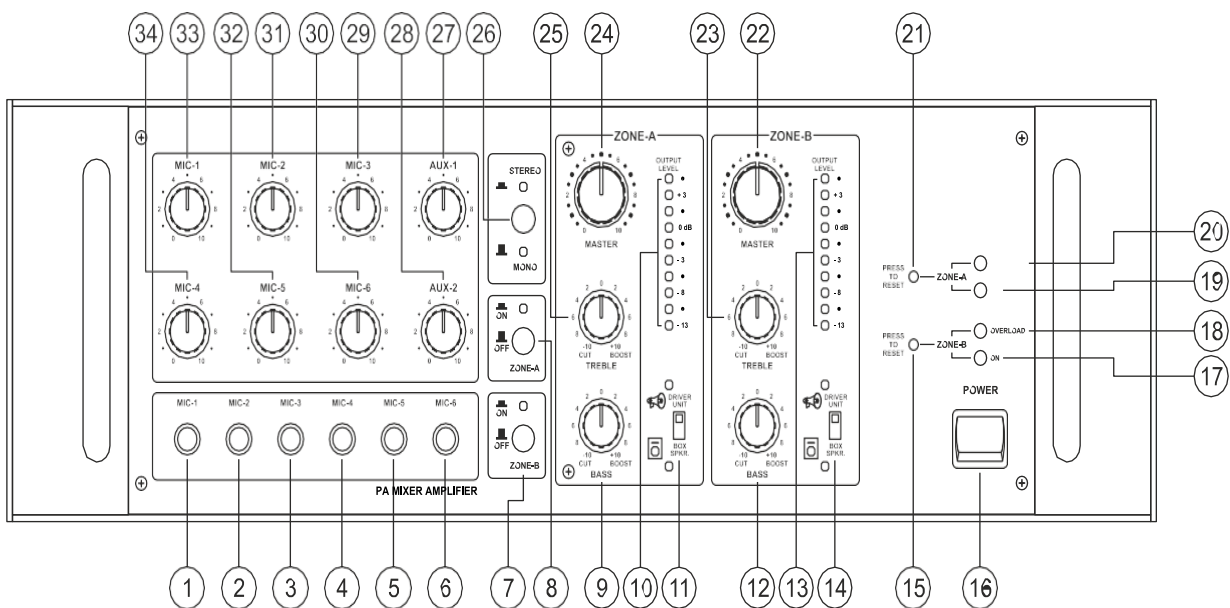
Power Supply	AC: 220-240V 50/60Hz DC: 24V (2×12V Car Battery)
Power Output	400W + 400 RMS at 5% THD, 280W + 280W RMS at 2% THD 500W + 500W Max., 350W + 350W RMS at 10% THD
Output Regulation	≤ 2 dB, no load to full load at 1kHz
Input Channels	Mono 6 × Mic 0.6mV/4.7kΩ, 2 × Aux 100mV/470kΩ Stereo L/R 200mV/100kΩ, Line L/R 1V/50kΩ
Frequency Response	50-15,000Hz ±3dB
Signal to Noise Ratio	60dB
Tone Controls	Bass: ±10dB at 100Hz, Treble: ±10dB at 10kHz
Outputs	Preamp 200mV/600Ω, Line 1V/1kΩ
Speakers Outputs	4Ω, 8Ω, 70V & 100V for Each Zone
Power Consumption	AC: 1100VA DC: 13A

## Mechanical Information

Dimensions (MM)	510 × 185 × 470
Weight	39.8Kg
Colour	Black
Housing	Mild Steel

## Architectural Drawings

### Front View



### Rear View

